

Royal West Sussex 

NHS Trust

**St Richard's Hospital
Spitalfield Lane
Chichester
West Sussex
PO19 6SE****Tel: 01243 788122
Fax: 01243 531269
www.rwst.nhs.uk**23rd February 2009

Councillor David Stephen Butler
Chairman, Health Overview & Scrutiny Panel
Portsmouth City Council
Civic Offices
Guildhall Square
Portsmouth
PO1 2AL

Dear Councillor Butler,

Hyperbaric Medicine Unit

Thank you for your letter of the 10th February concerning the relocation of the hyperbaric chamber to St Richard's Hospital, Chichester. I would be happy to attend any future meetings of the HOSP but hopefully the attached will reassure you and your fellow members of the panel.

There are two chambers involved one on the Haslar site and a second smaller unit. We are investigating with QinetiQ the practicalities of transferring the smaller unit to St Richard's, which would reduce or obviate any gap in the service. It is planned to transfer in line with the closure of the Haslar unit.

We hope to start construction for the larger unit in April with a 6 month construction programme. The design is complete, a contractor has been appointed and the cost agreed.

Attached are three plans, a location plan which indicates the unit on the site, a block plan which shows its proximity to A & E and such facilities as MRI and coronary care. The unit will have immediate access to a full range of clinical services.

The third plan shows the internal layout of the unit; part is within the existing build and part built out into an adjoining courtyard. The facility is designed to take ambulant patients with the waiting room and patient change, as well as trolley patients with a small resuscitation/recovery area. A larger resuscitation area, if required, is available either in the adjoining coronary care or A & E.

The agreement with QinetiQ is for a 14 year lease, it contains a commitment to keep an A & E service open on the site. With the merger of St Richard's with Worthing Hospital there is now no question of core emergency services coming off the St Richard's site, so the back up is secure. QinetiQ will provide the specialist staff to run and manage the chamber and the hyperbaric treatment, our staff will provide any back up and other medical support that may be necessary, including inpatient care.

We have two helicopter sites, one immediately outside the A & E which I have marked "A" on the location plan. This is used by both the air ambulance and the police helicopters when they transport patients. This is too small for the old Sea Kings etc and we have a temporary site to the North for the larger machines indicated "B" but by the time the unit opens we plan to have relocated it to "C" on an adjoining playing field of the University of Chichester. This will be able to take the largest of machines.

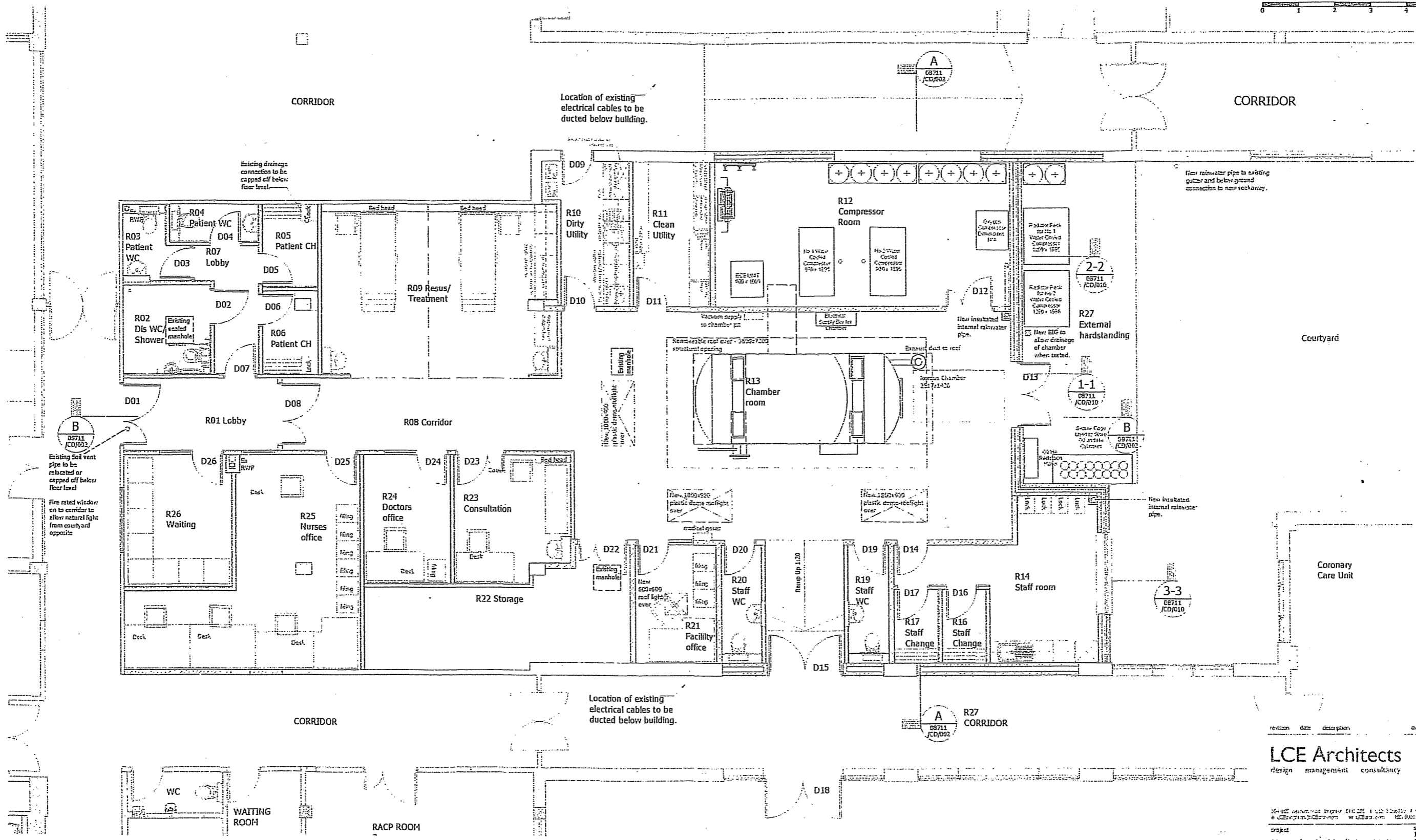
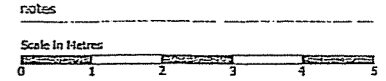
Please do not hesitate to give me a ring if anything is unclear or you require any further information.

Yours sincerely,

A handwritten signature in black ink, appearing to read 'N A Fox', written in a cursive style.

N A Fox
Director of Strategy

A long, horizontal handwritten signature in black ink, likely a stylized version of the name 'N A Fox'.



Floor Plan

revision date description

LCE Architects design management consultancy

104162 Westwood Drive, Eastleigh, Hampshire, UK. Tel: 01329 422222. Fax: 01329 422223. www.lcearchitects.com

project Hyperbaric Medicine Unit St Richards Hospital scale 1:50 S-A1 1:100 S-A2 date Sept 2009

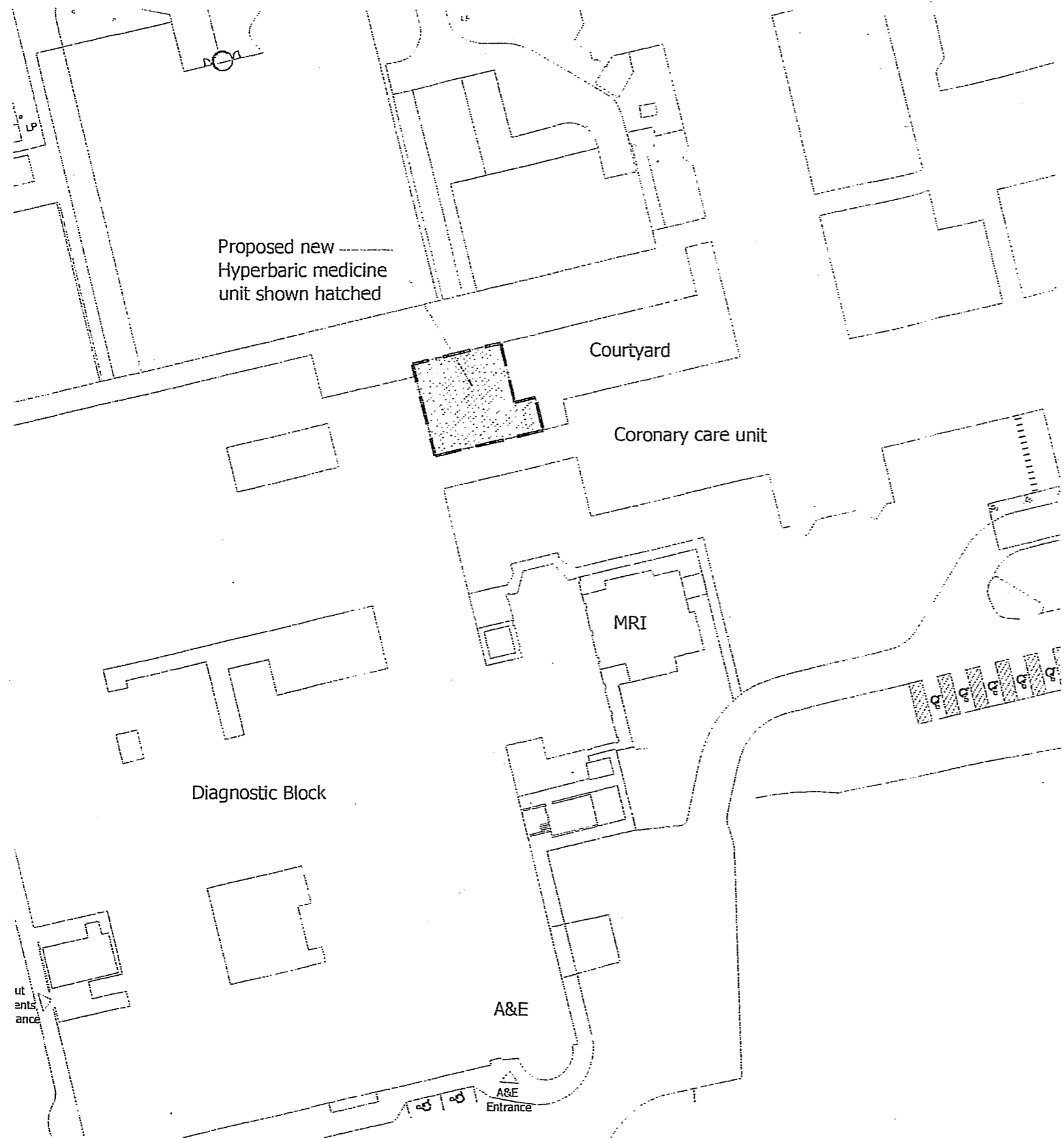
client Royal West Sussex NHS Trust

drawing Floor Plan

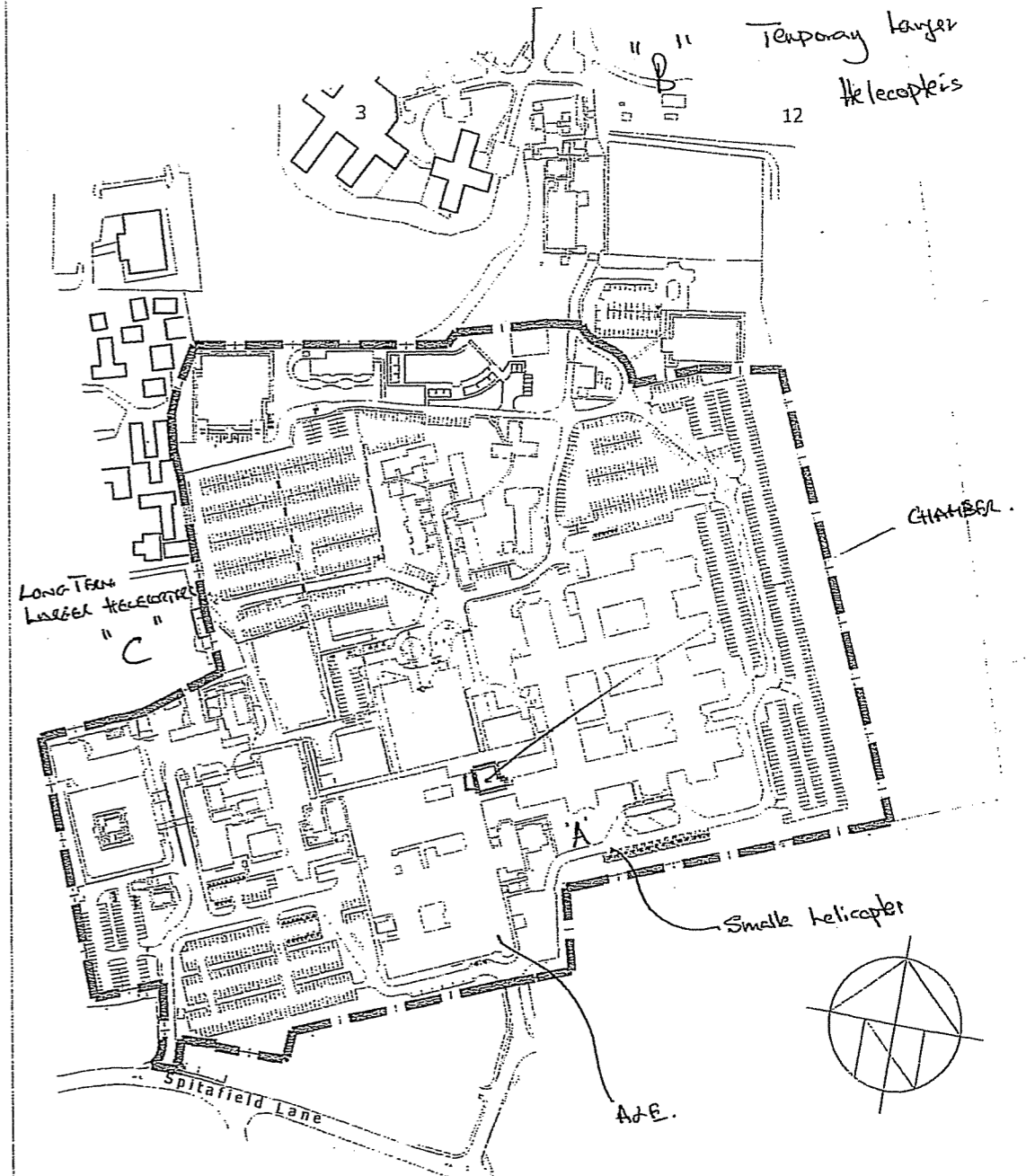
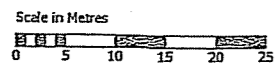
drawing number 08711/CD/001 revision C

- 14-12-08 Existing WC removed in staff office. 200 seats. Improved desks added and 1000mm room enlarged. Additional furniture added.
- 12-10-08 R01, R12, R13, R14, R15, R16, R17, R18, R19, R20, R21, R22, R23, R24, R25, R26, R27 reconfigured to suit engineering site dimensions. Size of new higher levelled SW... (text continues)

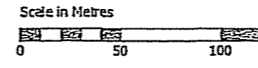
DO NOT SCALE FROM THIS DRAWING. SITE OFFICE IS NOT TO SCALE.



Block Plan 1:500



Location Plan 1:2500



revision date description user ddn

LCE Architects
design management consultancy

Hyperbaric Medicine Unit
St Richards Hospital

Royal West Sussex
NHS Trust

Block & Location Plan

08711/PA/001